

# YEAR 11 FOCUS EVENING

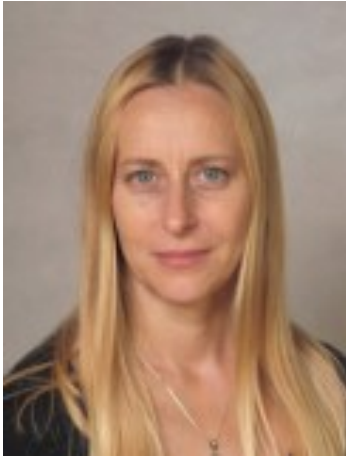




---

# STAFF

## Pastoral Team



**Year Leader:** Mrs Konieczna  
ekonieczna@dwhs.co.uk



**Deputy Year Leader:** Ms Zounaki  
mzounaki@dwhs.co.uk



**Assistant Head:** Mrs Kullar  
dkullar@dwhs.co.uk

## Form Tutors



**11AS**  
Ms Ashraf



**11BT**  
Mr Brookes



**11BU**  
Mrs Brunton & Ms Mohmud



**11CW**  
Ms Curnow



**11DH**  
Mrs Dhaliwal



**11JV**  
Ms Javed



**11LI**  
Mrs Lingampali



**11MB**  
Mrs Banu

---

# KEY DATES

29th September—10th October	First set of IAG interviews
3rd November	PPE1 starts
18th November	Sixth Form Open Evening
17th December	PPE1 results issued
20th November	Applications for Sixth Form open
5th January	A level Taster/Tertiary Taster Day
22nd January	Year 11 Parents Evening
23rd January	Applications for Sixth Form close
2nd—13th February	Second set of IAG interviews
23rd February	PPE2 starts
26th March	PPE2 results issued
March/April/May	Practical exams
5th May	Written exam season starts
26th June	Written exam season ends
20th August	GCSE Results Day / Sixth Form Entrance Interviews



# EXAM BOARDS

Subject	Exam board
English Language	AQA
English Literature	AQA
Maths	AQA
Science	Edexcel (Pearson)
Art	AQA
Business	AQA
Citizenship	Edexcel( Pearson)
Computer Science	OCR
Design and Technology	AQA
Drama	Eduqas
French	AQA
Geography	Edexcel Geography A
Health & Social Care	Edexcel (Pearson)
History	Edexcel (Pearson)
PE (GCSE)	OCR
Photography	AQA
Religious Studies	AQA
Sociology	AQA
Spanish	AQA
Sport (BTEC)	Edexcel (Pearson)

# PPE TIMETABLE EXAMPLE

## Week 1

	Mon	Tue	Weds	Thu	Fri
AM from 09.00	English Lang 105 mins	Maths 1 90 mins	Triple Science Physics 105 mins Comb. Science Physics 70 mins	History 1 75 mins	Business 1 90 mins
from 11.35		French Read. Spanish Read. 45 / 60 mins		Computing 1 60 mins	French Wr. Spanish Wr. 65 / 80 mins
PM from 13.30	P.E. 60 mins R.E. 1 105 mins	Geography 1 90 mins	Sociology 1 105 mins	Citz. 1 105 mins Drama 90 mins	Geography 2 75 mins

## Week 2

	Mon	Tues	Weds	Thu	Fri
AM from 09.00	English Lit 105 mins	Triple Science Chemistry 105 mins Comb. Science Chemistry 70 mins	Maths 2 90 mins	Triple Science Biology 105 mins Comb. Science Biology 70 mins	Maths 3 90 mins
from 11.35	French List. 35 / 45 mins		Computing 2 60 mins		Business 2 90 mins
PM from 13.30	Spanish List. 35 / 45 mins	History 2 80 mins	Citz. 2 105 mins	R.E. 2 105 mins	Sociology 2 60 mins

## Week 3

	Mon	Tue	Weds	Thu	Fri
AM from 09.00	Art	P.E.		Drama	
	Practical all day	Photography Practical all day		mini-practical Reg, P1 & P2	

# REVISION

## Where to revise?

- A quiet space
- Access to revision materials
- No music or social media
- **No phone**
- Regular breaks and healthy snacks

## How can parents help?

- Help students get organised
- Create a revision timetable
- Ensure they eat sensibly and drink plenty of water
- Ensure they have a good night's sleep
- Ensure they have regular revision breaks
- Communicate with us if you have a concern

## Key Advice

- Attend school revision classes
- Make use of the study room
- Use revision materials provided
- Be specific with chunks of learning to revise
- Prioritise your weaker subject areas

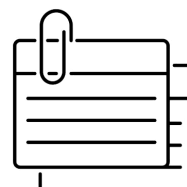
## In school support

- Breakfast Club
- Library
- Study room
- Curriculum Support

## Tips

- Make sure your revision is active - **don't just reread notes**
- Use **headings, subheadings, bullet points** and **images**
- Make **flash cards** and summarise key learning
- Need any help with revision? **You will be going through aspects of this in your form time. Speak to your tutors.**
- Carry them everywhere you go and steal back your 'dead time'

Revision resource options	How to use
Websites	Watch videos of new/difficult topics, regularly recap older topics. Complete quizzes
Knowledge Organisers	Memorise the content in chunks and self-test.
Flash cards	Self-test using the Leitner box method.
Past Papers	Complete questions in timed conditions.
Revision books	Create condensed notes and complete exam style practice
Exercise books for rewriting	Read-cover-write-check to make sure that you can recall content. notes





# STRESS MANAGEMENT

Year 11 can be a particularly challenging time for many students. In order to achieve your potential, you will need to be at your best, the following advice is



## TALK ABOUT YOUR NERVES

Nervousness is a natural reaction to exams but bottling it up will only make it worse. Talk to your child about how they're feeling, it will help them to relieve any stress and worrying they maybe experiencing.



## BELIEVE IN YOURSELF

If you work hard and stay focused with positive energy, stress will be reduced. Believe in yourself and have the confidence to succeed.



## KEEP THINGS IN PERSPECTIVE

Exams will seem like the most crucial thing, but in the grander scheme of things it's only a small part. Remind your child of this and tell them, they can only do their best and that's enough!



## GET ORGANISED

You'll feel more confident and in control if you make a list of everything you need to study and create a schedule.



## EAT RIGHT

Ensure your child is eating three healthy meals a day and limit their caffeine and sugar intake. Power foods for your brain include blueberries, salmon and nuts!



## MAKE SLEEP A PRIORITY

Without getting the proper rest it will be even harder to retain information. A good sleep of between 7-9 hours every night helps you have a relaxed and well-rested mind and body.



## EXERCISE

A healthy body = a healthy mind. Encourage your child to do at least 20 minutes of physical activity a day to help improve their focus and keep them relaxed.



## OVERCOME PROBLEMS

If you find you don't understand some of your material, getting stressed out won't help. Instead, take action to address the problem directly by seeing your teacher or revising on GCSEPod.

# SCHOOL RESOURCES

There are a large number of resource on our Managed Learning Environment (Office 365).  
Log onto Office365 using your child's school credentials.

Knowledge organisers summarise all the content for a particular topic. These are organised by subject and topic.

You can use these to revise with you child, checking they have memorised all the content.

## Welcome to the DWHS Learning Resources

[Home](#) [Documents](#) [Prep Learning](#) [Knowledge Organisers](#) [GCSEpod](#)

[Documents](#) > [#Knowledge Organisers](#) > [History](#) > **4. GCSE**

Name
GCSE - Conflict in the Middle East Knowledge Organiser
GCSE - Elizabethan England Knowledge Organiser.pptx
GCSE - Medicine in Britain Knowledge Organiser.pptx
GCSE - Nazi Germany Knowledge Organiser.pptx
GCSE - Western Front Knowledge Organiser.pptx

## Welcome to the DWHS Learning Resources

[Home](#) [Documents](#) [Prep Learning](#) [Knowledge Organisers](#) [GCSEpod](#)

[Documents](#) > [Computer Science](#) > **5. GCSE**

Name
Databases
Past papers
Programming tasks

- 2016 June
- 2017 June
- 2018 June
- 2019 June

In the documents section you can browse by subject to find extra resources such as more detailed notes, past papers and other support.



# GCSEPod



**1** GCSEPod.com

LOGIN

**2** Click here to login

Click on the 365 button

**4**

Or sign in with:  
Your GCSEPod account and external account must have the same email address

Sign in with Google



Sign in with Office 365

Click on the button below to Sign in with Office 365:



Sign in with Office 365

OR

If you can't use the button above, please enter your email to

Email address

123456@gcsepod.co.uk

Type in your 365 username and password and click login.

**5**

Login

Student



Login as a student

I'm new to GCSEPod

**3**

Login as a student

# GCSE POD

Click the Learn icon.

Browse the subjects.

Click to download.

Star tough topics for revising.

Take a quiz to test your knowledge.

The screenshot displays the GCSE POD interface. On the left is a vertical sidebar with icons and labels: Home, Teach, Assess, Manage, Engage, Reports, and Refer. The main area features a grid of subject tiles: British Values, Maths (with the formula  $\sqrt{x^2}$ ), Statistics, English Literature, Getting Ready for KS5, Chemistry, Physics, and a Show More button. Below this is a video player showing a video titled 'Childe Harold's Pilgrimage' with a play button overlay. To the right of the video player are two video thumbnails: 'Poet's Intentions' (00:00 / 04:54) and 'When We Two Parted: Subject and Themes' (00:00 / 03:29). Each thumbnail has a star icon and a download icon. At the bottom is a purple navigation bar with the text 'Try some questions' and three buttons: 'AS TEACHER', 'AS STUDENT', and 'SHARE'. On the far right of the bar is a 'Student Results' button and a user profile icon.

# ADDITIONAL CLASSES

	Monday	Tuesday	Wednesday	Thursday	Friday
<b>Before school</b>	<b>Maths</b> Ms Kausar MAT8 8:00-8:45	<b>Maths</b> Ms Jabeen MAT4 8:00-8:45 <b>Triple Biology and Chemistry</b> Ms Taylor - Science 4 - week 1 - chemistry revision, week 2 - biology revision -8:00-08:45 - triple set 3 only	<b>Computer Science</b> ICT2 <b>Mc Cheng</b> 8.00 - 8.45am  <b>Maths</b> Ms Jabeen MAT4 8:00-8:45 <b>Ms Kausar</b> MAT8 8:00-8:45	<b>Maths</b> Mr Bharj MAT5 8:15-8:45 Ms Jabeen MAT4 8:00-8:45 <b>Ms Dhalwal</b> MAT7 8:15-8:45 <b>Ms Kausar</b> MAT8 8:00-8:45	<b>Maths</b> Ms Jabeen MAT4 8:00-8:45 <b>Ms Kausar</b> MAT8 8:00-8:45
	<b>Library</b> 8.00 - 8.45am  Health and Social Care <b>Ms Ibrahimovic</b> Media 1:35-2:10pm	<b>Library</b> 8.00 - 8.45am	<b>Library</b> 8.00 - 8.45am  Business Bis2 <b>Mc Chan</b> 1.35-2.10pm	<b>Library</b> 8.00 - 8.45am	<b>Library</b> 8.00 - 8.45am
<b>Lunch</b>					
				<b>Triple Physics</b> <b>Ms Baru</b> - anyone from triple physics is welcome - Science 1 - 13:35-14:10	
	<b>Study room (Graphics room)</b> 1.35 - 2.10 pm	<b>Study room (Graphics room)</b> 1.35 - 2.10 pm	<b>Study room (Graphics room)</b> 1.35 - 2.10 pm	<b>Study room (Graphics room)</b> 1.35 - 2.10 pm	<b>Study room (Graphics room)</b> 1.35 - 2.10 pm
<b>After school</b>	<b>Geography (Selected groups)</b> Hums 1 Mr Tennant Hums 6 Ms Elwood Hums 7 Mr McCarthy	<b>Computer Science</b> Wk1 <b>Ms Patel</b> 3.15-4.15	<b>Science</b> <b>Mr Islam</b> - Combined science set 4 - 15:15-16:00 - select students will be invited	<b>Photography</b> Wk1 and 2 <b>Ms S Williams</b> (Confirm with W/M beforehand) 3.15 - 4.30	<b>Citizenship</b> 3.15-4.15pm CPSHE room <b>Week 1</b>
	<b>English</b> Ms. Murray, EN62, 3.15 - 4.15pm Invitation only Mr. Marker, MFL4, fortnightly (confirm with MK beforehand), 3.15 - 4.15pm	<b>English</b> Ms. Quinn-Guest, EN64, 3.15 - 4.15pm	<b>Year 11 ART</b> Thursdays afterschool - 4.30		
				<b>Maths</b> Ms Shiju MAT3 3:15-4:00 <b>Ms Lingappalli</b> MAT2 3:15-4:00	
				<b>Science</b> Miss Raik - 15:15-16:00 - Science 2 - only set 6	
	<b>Library</b> 3.15 - 5.00 pm	<b>Library</b> 3.15 - 5.00 pm	<b>Library</b> 3.15 - 4.00 pm	<b>Library</b> 3.15 - 5.00 pm	<b>Library</b> 3.15 - 5.00 pm



# PARENT APP

The My Ed app is used to communicate important information to parents, including letters, questionnaires, consent forms and information about trips.

- The app will only work on a smartphone
- The app is only available on play store and iTunes
- The app has to be downloaded onto the phone of the person that is registered with us as the first point of contact
- It cannot be used on a student's phone



# HIGHER DESTINATIONS

UNIVERSITY	COURSE
Anglia Ruskin University	Animal Behaviour (with Placement Year)
Birkbeck, University of London	Accounting and Finance with Foundation Year
Brunel University of London	Computer Science (Software Engineering) with Placement
Brunel University of London	Finance and Accounting with Placement
Brunel University of London	Mechanical Engineering
Brunel University of London	Economics and Mathematics with an Integrated Foundation Year
Brunel University of London	Electronic and Electrical Engineering
Brunel University of London	Geography with Placement
Cardiff University	Diagnostic Radiography and Imaging
City St George's, University of London	Law LLB
City St George's, University of London	Adult Nursing
City St George's, University of London	Psychology
City St George's, University of London	Business Management
City St George's, University of London	Computer Science
City St George's, University of London	Accounting and Finance (Foundation)
City St George's, University of London	Finance (Foundation)
City St George's, University of London	International Political Economy
Imperial College London	Biochemistry
King's College London, University of London	Nursing with Registration as an Adult Nurse
King's College London, University of London	Biomedical Science
King's College London, University of London	Midwifery with Registration as a Midwife
King's College London, University of London	Nursing with Registration as an Adult Nurse
King's College London, University of London	Nursing with Registration as an Adult Nurse
King's College London, University of London	Nursing with Registration as an Adult Nurse
King's College London, University of London	Nursing with Registration as an Adult Nurse
King's College London, University of London	Nursing with Registration as an Adult Nurse
King's College London, University of London	Mathematics with Statistics with Year in Industry
King's College London, University of London	Political Economy
Kingston University	Pharmaceutical Science MPharmSci
Kingston University	Children's Nursing (with Foundation Year)
Kingston University	Criminology and Forensic Psychology
Kingston University	Pharmaceutical Sciences (Foundation)
Kingston University	Pharmacology (Foundation)
Kingston University	Children's Nursing
Kingston University	Accounting and Finance with Professional Placement Year
Liverpool John Moores University	Civil Engineering
London School of Economics and Political Science, University of London	Law (Bachelor of Laws)
London School of Economics and Political Science, University of London	Law (Bachelor of Laws)
London School of Economics and Political Science, University of London	Law (Bachelor of Laws)
Queen Mary University of London	Computer Science and Artificial Intelligence with Industrial Experi-
Queen Mary University of London	Economics
Queen Mary University of London	Chemical Engineering
Queen Mary University of London	Mathematics with Foundation
Queen Mary University of London	History

Queen Mary University of London	Mathematics with Foundation
Queen Mary University of London	Computer Science
Queen Mary University of London	Applied Artificial Intelligence
Royal Holloway, University of London	Biomedical Sciences
Royal Holloway, University of London	Computer Science (Cyber Security) with a Year-in-Industry
Royal Holloway, University of London	Law with a Year in Industry
Royal Holloway, University of London	Business and Management (Year in Business)
Royal Holloway, University of London	Accounting and Finance
Royal Holloway, University of London	Business and Management (Year in Business)
Royal Holloway, University of London	Accounting and Finance
Royal Holloway, University of London	Computer Science (Artificial Intelligence) with a Year-in-Industry
Royal Holloway, University of London	Business and Management (Year in Business)
Royal Holloway, University of London	Management with Accounting (Year in Business)
Royal Holloway, University of London	Economics and Data Science
Royal Holloway, University of London	Law
Royal Holloway, University of London	Management with Accounting
Royal Holloway, University of London	Management with Accounting
Royal Holloway, University of London	Management with Accounting
Royal Holloway, University of London	Law with Integrated Foundation Year
Royal Holloway, University of London	Management with Accounting (Year in Business)
Royal Holloway, University of London	Accounting and Finance
Royal Holloway, University of London	Management with Accounting
Royal Holloway, University of London	Economics, Politics and International Relations with a Year in Business
Royal Holloway, University of London	Business and Management (Year in Business)
Royal Holloway, University of London	Business and Management (Year in Business)
Royal Holloway, University of London	Management with Accounting (Year in Business)
Royal Holloway, University of London	Economics
Royal Holloway, University of London	Accounting and Finance
Royal Holloway, University of London	Management with Digital Innovation and Analytics
Royal Holloway, University of London	Geosciences & Sustainable Energy
Royal Holloway, University of London	Law
Royal Holloway, University of London	Accounting and Finance with a Year in Business
Royal Holloway, University of London	Mathematics
Royal Holloway, University of London	Law
Royal Holloway, University of London	Management with Accounting (Year in Business)
SOAS University of London	Politics, Philosophy and Economics
SOAS University of London	Politics and International Relations
SOAS University of London	Business, Management, Economics & Law with Foundation Year
St Mary's University, Twickenham	Business Management and Finance with Foundation Year
St Mary's University, Twickenham	Criminology and Sociology
St Mary's University, Twickenham	Primary Education with QTS
St Mary's University, Twickenham	Sport and Exercise Nutrition
St Mary's University, Twickenham	Primary Education with QTS
UCFB	Sports Business and Coaching
UCL (University College London)	Mechanical Engineering
University of Essex	Social Work
University of Exeter	Law with Business with Professional Placement
University of Greenwich	Psychology with Counselling
University of Greenwich	Accounting and Finance



University of Leicester	Electrical and Electronic Engineering
University of Leicester	Economics
University of Leicester	Accounting and Finance
University of Manchester	Civil Engineering with an Integrated Foundation Year
University of Nottingham	Chemical Engineering including an Industrial Year
University of Nottingham	Criminology
University of Plymouth	Biomedical Science with Foundation Year
University of Reading	Finance with Foundation
University of Reading	Biomedical Science with Foundation
University of Reading	Pharmacy with Preparatory Year
University of Reading	Education Studies
University of Reading	Law
University of Reading	Law
University of Southampton	Economics and Finance
University of Surrey	Accounting and Finance
University of Surrey	Biological Sciences
University of Surrey	Accounting and Finance
University of the Arts London	Interior Design
University of the Arts London	Photography
University of Warwick	Chemistry
University of Warwick	Politics, Philosophy and Law (PPL)
University of Warwick	Mathematics
University of Warwick	Politics
University of Warwick	Politics
University of West London	Music Technology with Foundation
University of West London	Professional Policing

## 2025 University Destintions

